

## LSR120 CBC

2D Barcode Reader for Anti-Fraud

### High-Speed Barcode Reading

The Access LSR120 barcode reader has been optimised to read CBC (customer barcode), linear and 2D barcodes commonly used on utility bills, to allow verification against the printed address and help to catch fraudulent documents.

Utility bills are commonly presented as proof of address. While fraudsters can easily falsify the address on documents, producing a fraudulent postal or customer barcode presents a much greater challenge. Often the barcode is simply overlooked. The LSR120 provides the operator with instant reading and decoding of barcodes, and provides a useful additional check of the presented document.



### Face-Up Reading in Any Orientation

The LSR120 is a high-performance, omnidirectional barcode imager that captures barcodes within a second of presentation in any orientation – straight, sideways or upside down. A bright green indicator and sounder confirm a good read.



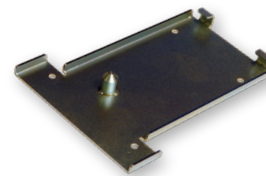
### Withstands Years of Frontline Use

Purpose-designed to scan documents on the tabletop, the imager reads all popular linear, PDF417 and 2D symbologies currently used by postal systems and documents around the world. The device's wide depth of field and bright aiming line allows any operator to read a document barcode intuitively and without hesitation.

Ruggedly constructed, with no moving parts, these devices are built to withstand years of frontline use.

### Quick Release Bracket (QRB)

The **LSR120 QRB** provides a simple means to secure the device to a counter-top or podium preventing it from being damaged or stolen and acting as a deterrent to agents relocating the hardware.



## Device Features

### Connection Types

- USB
- RS232

### Technology

- Barcode

### Features

#### Barcodes Read

Supports documents & utility bills incl. POSTNET, PLANET & Intelligent Mail barcode (IM barcode); CBC including RM4SCC & KIX, PostBar CPC 4-state CBC, 2D PDF417

#### Fast Barcode Reading

Fast, omnidirectional 1D/2D barcode imager

#### Connection Options

RS232 and USB (serial or keyboard) interface options

#### User feedback

Green and red indicator lights and audio beeper

#### Secure Installation

Bracket available for fixed position installation

#### Easy Software Upgrades

FLASH upgradeable software

## Applications

- Prevention of customer identity fraud, such as verifying address barcodes on utility bills
- Anti-fraud and anti-money laundering for banks, building societies and attorneys/solicitors

### Barcode Symbologies Read

Linear: POSTNET, PLANET & Intelligent Mail barcode (IM barcode); CBC including RM4SCC & KIX, PostBar CPC 4-state, Japanese Post, EAN UPC, Code 2 of 5, Interleaved 2 of 5, IATA 2 of 5, Code 39, Code 128

2D: IATA resolution 792, PDF417, Aztec, DataMatrix and QR codes

Media types read: Smartphone/tablet displays & paper tickets

### Interface

Interface options: RS232 and USB (serial and keyboard)

### Mechanical

Size (WxDxH): 116 x 187 x 115mm

Weight: 615g

Colour: Dark Grey

MTBF: 85,000 hours

### Power Supply

Power: 4.5 to 5 VDC

Current (Typical): 310 mA

### Environmental

Temperature:

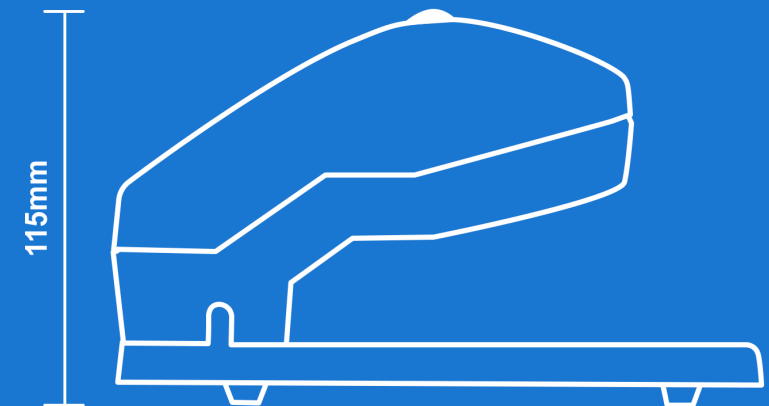
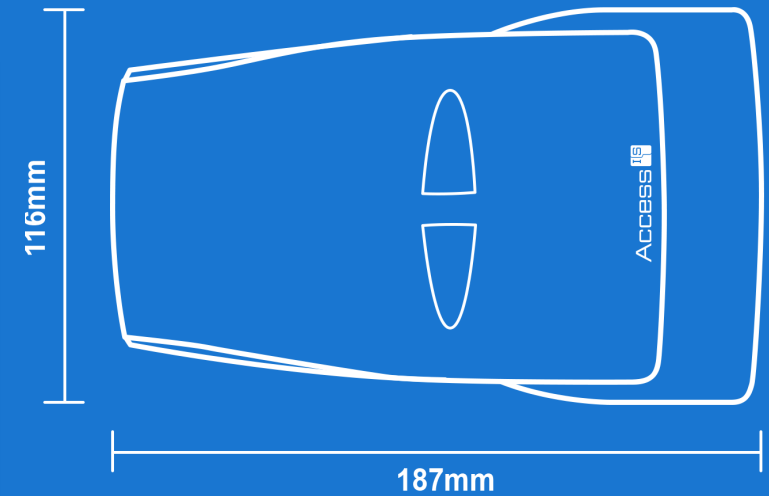
Operating: 0°C to 50°C

Storage: 0°C to 60°C

Humidity: 0 to 95% RH, non-condensing

### Approvals

FCC Class B, CE EMC Class B, CE Low Voltage Directive, IEC 62471: 2006 - Exempt Class



## Get In Touch

You can get in touch via our website at [access-is.com](http://access-is.com) or by phone and email:

+44 118 966 3333 [sales@access-is.com](mailto:sales@access-is.com)