

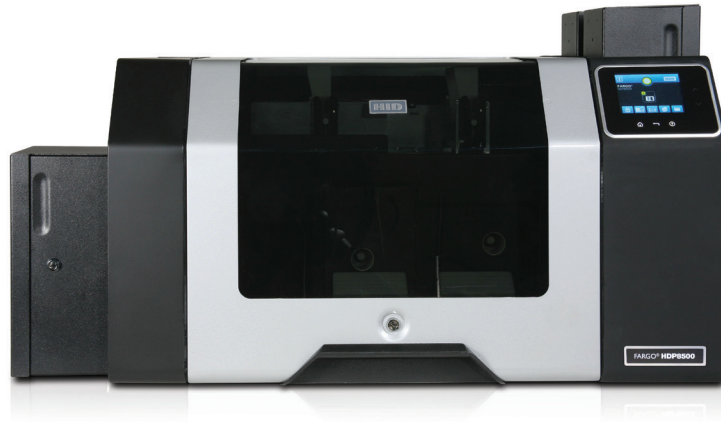
Printing and Encoding Solutions



FARGO® HDP8500
Industrial Card Printer/Encoder



Produce IDs reliably and continuously— even in the most demanding environments.



High definition printing

delivers the highest image quality—layered on the highest functioning cards. HDP Film fuses to the surface of proximity and smart cards, conforming to ridges and indentations formed by embedded electronics.



Rugged and Robust

The HDP8500 looks and feels more solid than other desktop printers. Its solid metal cabinetry and precision-engineered interior components provide improved resistance to parts fatigue and general wear from routine and repeated use.

High Duty Performance

With the FARGO® HDP8500 Industrial Card Printer/Encoder, HID Global delivers the most reliable, heavy duty performance ID card printer in the industry.

The FARGO HDP8500, featuring HID's High Definition Printing™ (HDP) technology, is the superior industrial ID printer for extended-run, high throughput credential personalization and issuance. It's especially suited for the high cycle requirements of large government ID card programs, laborious service bureau conditions, and demanding university and large enterprise environments.

With the FARGO HDP8500, you'll get a print system loaded with features that ensure reliability and durability. You'll get a system that performs—it has one of the highest card input capacities in the industry and requires minimal maintenance, saving you time and money. Additionally, the HDP8500 has been architected within the HID Global Trusted Identity Platform® (TIP™). Built-in security features such as operator PIN number access and multi-locking entry points, data encryption and resin ribbon data-erase functionality, ensures that your investment is secure.

Backed by HID Global's 35 years of manufacturing excellence and three-year*** warranty, it's the ideal solution for unparalleled quality, performance and security.

High Definition Printing Quality

HID Global pioneered High Definition Printing, also called retransfer print technology in desktop ID card printers. HID Global has leveraged this technology to introduce its fifth generation printer, the FARGO HDP8500. Retransfer technology produces crisp, high-definition images on technology cards—even cards with surface imperfections. The FARGO HDP8500 is the clear choice for ID issuance operations where the highest print quality is required.

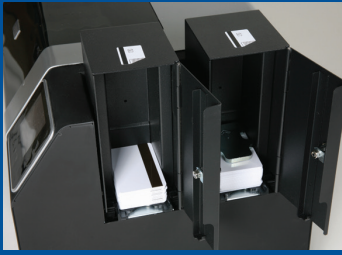
High Durability Results

The FARGO HDP8500 is designed to work with the most durable consumables, making it the ideal printer for ID cards that need to last, such as those used for government ID programs. Clear and holographic overlamine patches can be added to the card, providing higher card durability and longer card life.

Flexible Technology for Improved Options and Security

The FARGO HDP8500 uses HDP technology to print an image onto the card's surface making it more resistant to counterfeiting, and is the optimal choice for smart cards because it easily handles surface or embedded electronics irregularities. Additional options include:

- An embedded iCLASS SE® encoder that enables you to create, encode, and manage your secure access control or payment smart cards from start to finish; and/or
- A Wi-Fi® accessory that allows you to print over any secure wireless network.



Peak Performance

The HDP8500 sustains longer, uninterrupted, high-yield batch print runs. Large-capacity consumables and card input hoppers help minimize downtime. A clean, stable print environment and internal card flattener ensure consistently high-quality card output.



Maximum Security

The FARGO® HDP8500 is compliant with the security requirements of government ID issuers worldwide, such as physical locks on the input / reject hoppers and protection of misprinted or misencoded cards in an internal reject bin.

The HDP8500 provides highly secure print job authorization at the point of issuance, including AES-256 data encryption, a data-erase feature that renders information on used ribbons illegible, and a proprietary, secure link between the printers and consumables used in your unique large ID project.



Enhanced System Reliability for Challenging Environments

Non-climate controlled areas, high heat, dirt and debris can routinely impact performance, affecting your productivity as well as overall print quality and reliability.

The FARGO HDP8500 is designed to safeguard against the most challenging operating environments. Its airflow and filtration system, canopy dust seals and internal temperature sensors maintain ideal printing conditions in the harshest conditions. Additionally, multiple in-line cleaning stations eliminate unexpected blank card surface debris, and a special cover projects card path sensors to help prevent defective card prints and printer jams.

Advanced System Performance for Enhanced Security and Throughput

In addition to demanding the highest level security features for their printer systems, governments need stable and consistent throughput as well as longer-life cards. HID Global delivers.

The FARGO HDP8500 has physical locks on all access points to protect the ribbon and film consumables, as well as the cards, before and after printing. Secure PIN access electronically locks the printer and advanced data decryption (AES-256) ensures the protection of your secure print jobs. The HDP8500'S resin erase feature also eliminates any personal data on used ribbon panel to further reduce the

risk of data corruption or counterfeiting. Finally, holographic or fluorescent (UV) overlaminates can be added to the card to provide a cost-effective, dynamic means of increasing overt, covert, or forensic card security.

Ideal for large batch print jobs, the FARGO HDP8500 by HID Global has multiprocessing capabilities to greatly increase card yield. For example, the system can encode one card while printing a second card and laminating a third. It also offers two additional print modes along with the standard print mode: performance mode, which provides the fastest throughput of approximately 1,000 full-color, single-side cards per shift; and premium mode which provides enhanced print quality for challenging images. Also, the HDP8500 has a patented dual input hopper feature, allowing you to print two different types of cards at once, such as employee and contractor ID badges.

Operational Convenience At A Lower Cost

Governments require printing solutions that focus on the lowest cost of operation. They need printer/encoders with predictable maintenance schedules and or limited service requirements—all supported by industry-leading product warranties. The FARGO HDP8500 has among the highest card capacity available on the market today and requires less user intervention than many competing industrial-grade printers. It provides an industry-first touch-



Key Elements for Successful Government ID Personalization Programs

With the HDP8500, HID took into account five key feature areas to ensure the productivity, security and reliability of your operation.

screen display so that you can quickly and easily determine printer status, or access diagnostic and maintenance information. It also has a fully accessible card path, allowing you to troubleshoot card jams or to quickly determine if further service is needed. An optional andon lighting system provides operators with visual remote printer status feedback across wider, secure print environments. Plus, the FARGO HDP8500 is backed by the longest warranty in the industry. Together, these value-add features help to ensure that your investment is always protected.

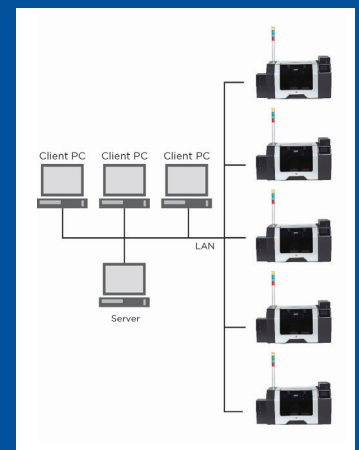
A Scalable and Flexible Solution

Not all IDs are the same. Some may require only single-side printing, while others need technology card encoding along with dual-side printing and laminating. Some organizations need a printer system that fits particular needs now, while also having the capacity to meet additional needs over time. The FARGO HDP8500 has several options that can be added to meet your specialized requirements, including:

- ISO magnetic encoding
- Contact or contactless card encoding
- ISO card flattening mechanism
- Andon light remote operator feedback
- Lamination module
- Wi-Fi® module for remote printing

The FARGO HDP8500 is completely field-upgradeable so that as your needs evolve, you don't need to purchase another solution.

What's more, the HDP8500 is fully interoperable with Genuine HID® technology. This guarantees the printer's compatibility with other products within the HID ecosystem, enabling you to leverage your existing HID technology investments.



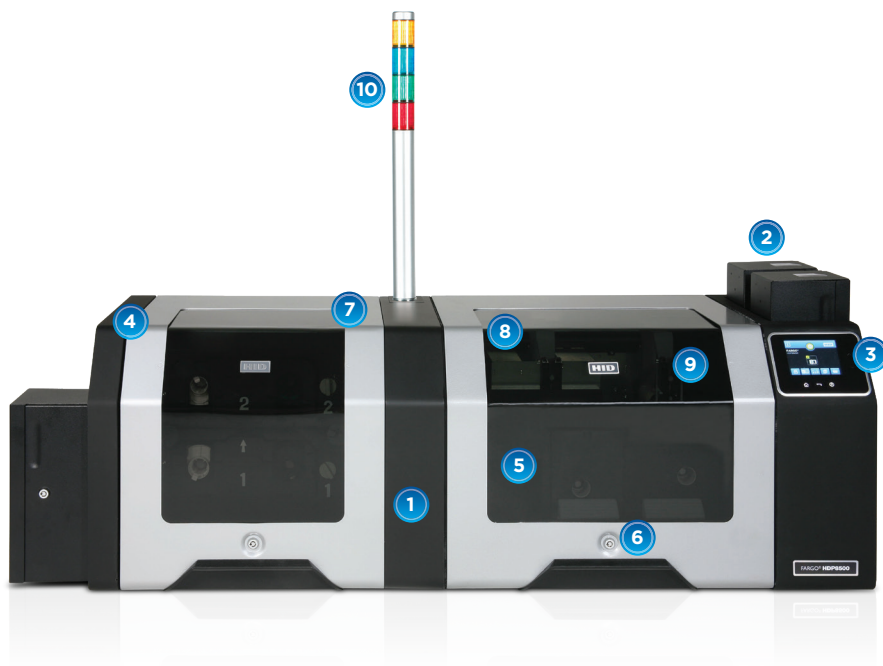
Produce secure High Definition IDs anywhere

Secure government-to-citizen ID card production is no longer limited to a single high-volume printer system in a central location.

Government organizations and service bureaus can issue IDs from multiple sites—centrally and remotely—in combinations that satisfy population centers of all sizes.

With an Ethernet port and internal print server, HDP8500 printer/encoders can be securely networked together to produce high volumes of ID cards in continuous batch runs, sharing one or more common or centrally managed databases.

FARGO® HDP8500 Industrial Card Printer/Encoder Features



- 1 Multi-processing capability: encode/print/laminate simultaneously
- 2 Dual locking input hoppers with 400-card total capacity
- 3 3.5-inch graphical touch-screen display with PIN access
- 4 Three-year*** full warranty and lifetime*** printhead warranty
- 5 Print protection with durable HDP consumables
- 6 Physical hardware locks
- 7 Airflow and filtration system: dense air filter, high-flow fans, door dust seals and internal temperature sensor
- 8 Multiple in-line card cleaning stations
- 9 Resin-erase, data protection feature
- 10 Multiple field upgradable printer options

Print Method	HDP dye-sublimation / resin thermal transfer
Print Platform	Dual-sided printing (standard)
Resolution	300 dpi (11.8 dots/mm)
Colors	Up to 16.7 million/256 shades per pixel
Print Speed (batch mode)**	<ul style="list-style-type: none"> • Up to 1200 cards per shift/24 seconds per card (YMC with transfer)* • Up to 992 cards per shift/29 seconds per card (YMCK with transfer)* • Up to 720 cards per shift/40 seconds per card (YMCKK with transfer)*
Simultaneous Printing/Encoding	Standard
User Interface	Touch-screen display
Accepted Standard Card Sizes	CR-80 (3.370" L x 2.125" W/85.6 mm L x 54 mm W)
Accepted Card Thickness	.030" (30 mil) to .050" (50 mil)/.762 mm to 1.27 mm
Dual Input Card Cartridges/Capacity	(2) 200-card hoppers; Total capacity 400 cards (.030"/.762 mm)
Output Hopper Card Capacity	(1) 200-card hopper (.030"/.762 mm)
Software Drivers	Windows® XP/Server 2003/Vista (32 & 64 bit)/Server 2008 R2 (64 bit)/7 (32 & 64 bit)
Print Area	Over-the-edge on CR-80 cards
Warranty	<ul style="list-style-type: none"> • Printer—three years*** • Printhead—Lifetime**;
Options	<ul style="list-style-type: none"> • Card lamination module—dual-sided (simultaneous) • Secure proprietary consumables system • Magnetic stripe encoding • Custom secure holographic HDP film and overlamine • Smart card encoding (contact/contactless) • Andon production status light • iCLASS® and iCLASS SE programming/encoding platform kit • ISO card flattener • Printer cleaning kit • Dual output module(400 cards) • Wi-Fi® module
Included Software	FARGO Workbench Diagnostic Utility with Color Assist spot-color matching



HID Global®: The trusted source for the delivery of secure identity

HID Global is in an ideal position to participate in large-scale secure government-to-citizen ID issuance programs, from national IDs and driver licenses to e-health and electronic benefit transfer (EBT) cards. With over 500,000 FARGO ID printers installed worldwide, we offer a unique mix of secure ID technologies, including secure card production hardware, software and services. Hundreds of governments around the world trust HID Global as their source for the delivery of their citizens' secure credentials every day.

* Indicates the ribbon type and the number of ribbon panels printed where Y=Yellow, M=Magenta, C=Cyan, K=Resin Black, I=Inhibit, F=Fluorescing, H=Heat Seal.

** Print speed indicates an approximate print speed and is measured from the time a card drops into the output hopper to the time the next card drops into the output hopper. Print speeds do not include encoding time or the time needed for the PC to process the image. Process time is dependent on the size of the file, the CPU, amount of RAM and the amount of available resources at the time of the print.

***Three-year warranty available on printers and lifetime warranty available on printheads with completion of online printer registration. (Two-year warranty standard on both printer and printheads without online printer registration.)

North America: +1 512 776 9000
Toll Free: 1 800 237 7769
Europe, Middle East, Africa: +44 1440 714 850
Asia Pacific: +852 3160 9800
Latin America: +52 55 5081 1650

©2020 HID Global Corporation/ASSA ABLOY AB. All rights reserved. HID, HID Global, the HID Blue Brick logo, the Chain Design, Genuine HID, FARGO, HDP, iCLASS, Trusted Identity Platform High Definition Printing and One-2-One are trademarks or registered trademarks of HID Global or its licensor(s)/supplier(s) in the US and other countries and may not be used without permission. All other trademarks, service marks, and product or service names are trademarks or registered trademarks of their respective owners.
2020-03-16-fargo-hdp8500-printer-br-en PLT-00698

An ASSA ABLOY Group brand

ASSA ABLOY



[hidglobal.com](https://www.hidglobal.com)