

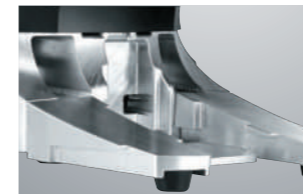


TP- 7715

FANLESS SKYLAKE HIGH PERFORMANCE POS SYSTEM

FEATURE

- Fanless Design with 6th/7th Generation Intel® Core Processors
- Latest DDR4 Memory, SATA 3.0, SATA III, RAID 0/1 and Intel i-AMT Support
- Support Up to External 2 Signage Displays and Compatible with iAMT (TP-7715 Plus)
- Slim, Sealed, Strong, Easy Maintenance and Stylish Design
- IP65/NEMA 4 Front Bezel Compliant
- Power USB Ports Supported (12V/24V)
- Double Hard Disks Storage Slots Design, Provides Raid Capability



Aluminum Durable Base with Secondary Hard Disk Drive



Modular Customer Display

APPLICATION |  Retail Industry



AP- 5715

INTEGRATION WITH PRINTER



Aluminum Die-casting Back Cover for Optimal Thermal Dissipation



Flexibility to Integrate Receipt Printers of Your Choice

