

FaceDeep 3

Smart Face Recognition Terminal



Wi-Fi



4G



Mask
Detection



Cloud



- New generation touchless solution for the people to access control on the entrance or record time attendance and simultaneously check mask-wearing without having to touch a terminal or gate.
- Built-in IR and visual cameras integrated with Anviz's unique BioNANO[®] algorithm to produce the best in class live face recognition performance.
- Equipped with a 5" IPS touch screen.
- Register up to 10,000 users for dynamic face authentication.
- Recognition distance up to 1.5 M with matching speed < 0.3s by 1: 10,000.
- Optional battery backup, specifically designed to work consistently in unstable power supply environments, such as Construction sites, Manufacturing, Schools and buildings in countryside, etc.

FaceDeep 3

Smart Face Recognition Terminal

FaceDeep 3



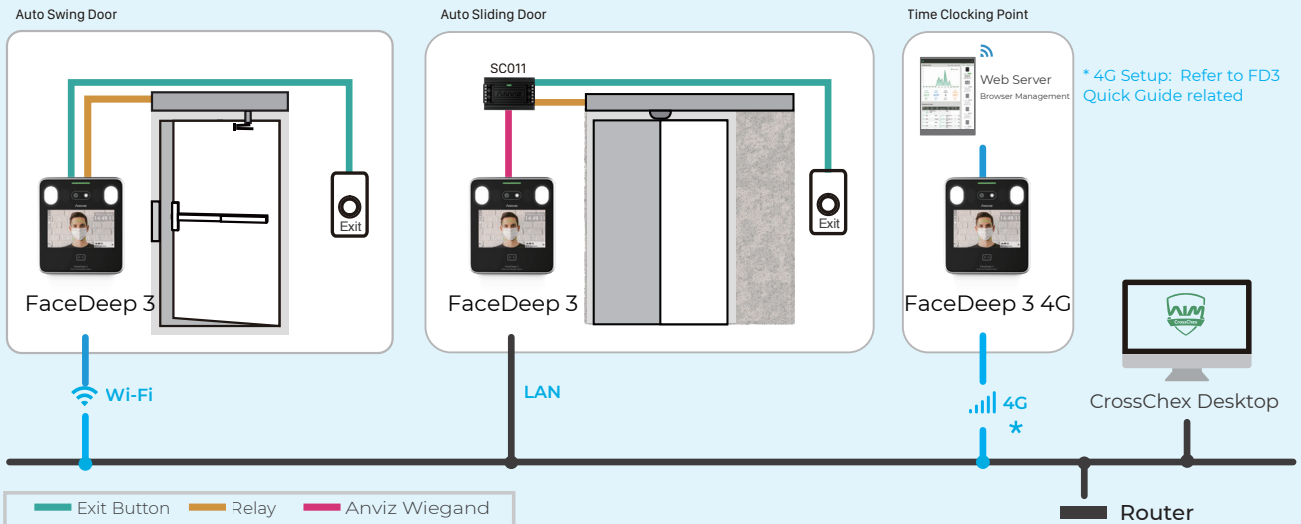
Product		FaceDeep 3		
Model		FaceDeep 3	FaceDeep 3 Pro	FaceDeep 3 4G
General	Identification mode	Face, Card, ID+Password		
	Face Recognition Distance	0.5 ~ 1.5m (19.69 ~ 59.06")		
	Face Recognition Speed	<0.3 S		
	RFID Technology	125KHz EM	13.56MHz Mifare	13.56MHz Mifare
IRT (Palm Temperature Detection)	Detection Distance	-		
	Temperature Range	-		
	Temperature Accuracy*	-		
Capacity	Max Users	6,000	10,000	10,000
	Max Cards	6,000	10,000	10,000
	Max Logs	100,000		
Function	Time Attendance Mode	8		
	Group, Time Zone	16 Access Groups, 32 TimeZone		
	WebServer	√		
	Record Auto Inquiry	√		
	Voice Prompt	√		
	Clock Bell	√		
	Multiple Language	√		
Hardware	CPU	Dual 1.0GHz		
	Camera	Dual Camera(VIS & NIR)		
	Scanning Area	Horizontal : ±20° Vertical : ±20°		
	Display	5" TFT touch Screen Resolution 720*1280		
	Smart LED	Support		
	Dimensions(W x H x D)	146*165*34 mm(5.75*6.50*1.34")		
	Working Temperature	-5°C~-60°C (23°F~-160°F)		
	Humidity	0% to 95%		
	Power Input	DC 12V 2A		
Interface	TCP/IP	√		
	RS485	√		
	USB PEN	√		
	Wi-Fi	√	-	-
	Wi-Fi+Bluetooth	-	√	-
	4G	-	-	√
	Relay	1 Relay Out		
	Temper Alarm	√		
	Wiegand	1 In & 1 Out		
Software Ompatibility	Door Contact	√		
	CrossChex Standard	√		
	CrossChex Cloud	√		

FaceDeep 3

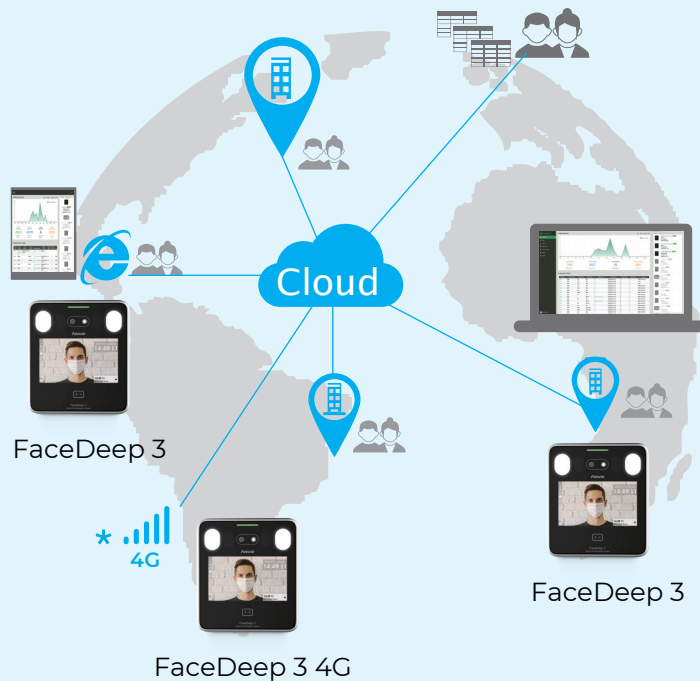
Smart Face Recognition Terminal

System Configurations

Local Deployment (Crosschex Standard)



Cloud Deployment (Crosschex Cloud)



Anviz Global Inc.

41656 Christy Street Fremont, Fremont, CA, 94538

Tel: 1-510-573-6552 | Toll-free: 1-855-268-4948 | sales@anziv.com | www.anziv.com

©2020 Anviz Global Inc. Anviz and identifying product names and numbers herein are registered trademarks of Anviz Global Inc. All non-Anviz brands and product names are trademarks or registered trademarks of their respective companies. Product appearance, build status and/or specifications are subject to change without notice.